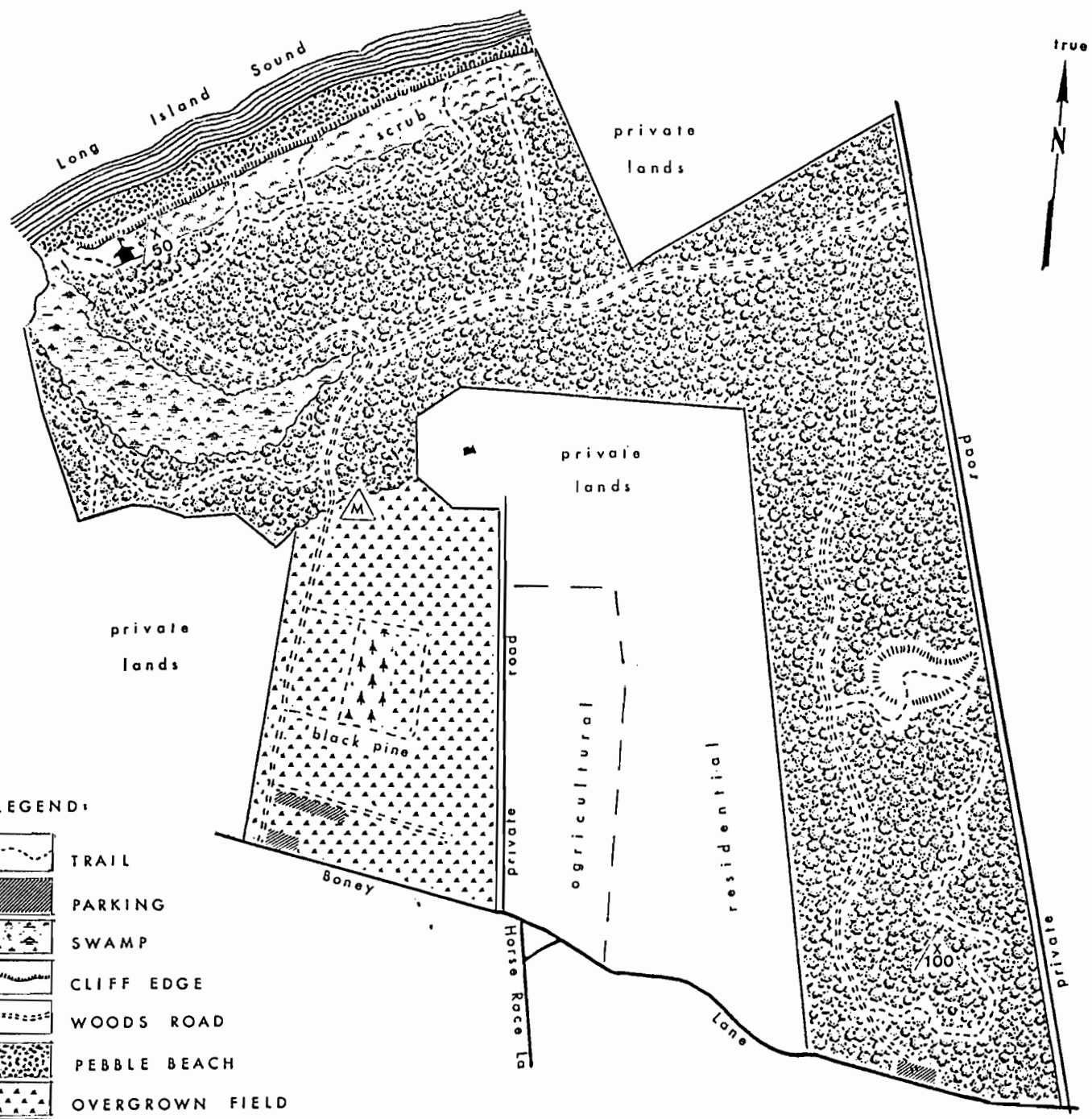



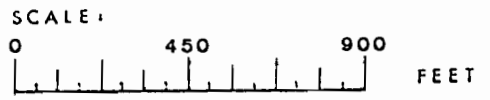


# David Weld Sanctuary



### LEGEND:

-  TRAIL
-  PARKING
-  SWAMP
-  CLIFF EDGE
-  WOODS ROAD
-  PEBBLE BEACH
-  OVERGROWN FIELD
-  WATCHMAN'S CABIN SITE
-  KETTLEHOLE AREA
-  MIXED HARDWOOD FOREST
-  SPOT ELEVATION IN FEET
-  COMMEMORATIVE MONUMENT



# DAVID WELD SANCTUARY

Village of Nissequogue  
Suffolk County

114 Acres Woodland & Shore Front



A. Milton

**Of Interest** Situated on the north side of the Harbor Hill terminal moraine, this preserve has 1800 feet of beach and bluff frontage, a northern hardwood forest, kettlehole community, woodland swamp, and an overgrown field. With such diverse habitats, the preserve has a wide variety of trees, shrubs, vines, ferns, and wildflowers. Among the trees is a tulip tree which is the tallest tree recorded on Long Island. Among the flowers are numerous lady's slippers. In the northwest portion of the preserve a stream once flowed into Long Island Sound, but is now blocked at its mouth by a close-growing stand of phragmites. The moist woodland is dominated by a red maple canopy. Young alders, spicebush, and viburnums comprise the understory. The diverse terrain of the preserve permits a good variety of small mammals and birds to thrive.

**History** Once a section of the famed Richard (Bull) Smith patent, the preserve's one-time climax woods were cut over for pasture by a Smith descendant in the early 1900's. A number of old oaks and maples were retained as border lines or as shade for ruminating cattle. Cattle grazing was abandoned in the 1920's and most of the area left free for natural succession, less the once proud American chestnut. The preserve is part of a larger tract purchased in the early 1960's by Mr. & Mrs. David Weld. The original grant of 42 acres donated in 1969 was enlarged by another gift, 15 acres, in 1972. Additional acreage was donated by Mrs. Weld in 1975, 1976, and 1979. Two generous neighbors of the Weld's, the Woodys and the Millers, each donated about four acres to the preserve.

**Admission** Like other preserves, this area is open to individuals and groups who obtain prior permission from the Conservancy and who abide by the Conservancy's policies on preserve use.

**Directions** Driving east on Route 25, somewhat over 4 miles beyond the Sunken Meadow State Parkway, turn left onto Edgewood Avenue at the light at top of hill before entering Smithtown Village. After about one mile turn left at the second traffic light onto Nissequogue River Road. Follow to the end, about two miles. Turn left onto Moriches Road and right onto Horse Race Lane. At the end, turn left on Boney Lane. The entrance is about 150 yards from the corner. Park in the mowed fire lane to the right within the preserve to the right of the entrance road. The combination for the gate lock must be obtained from the Chapter office.

