

(A discussion of pattern)

Biodiversity, Classification and Phylogeny Redux

What are scientists trying to accomplish? What evidence
can they use? (MVC)

Plant phylogeny: Seed plant evolution, drawing upon
paleontological evidence, comparative morphology, and
modern methods. Classification of plant families.

(MVC)

Which of these groups are monophyletic?

Roses

Lilies

Weeds

Vegetables

Trees

Flowering plants

How many species of vascular plants
are there?

What is a species, anyway?

How do we name species?

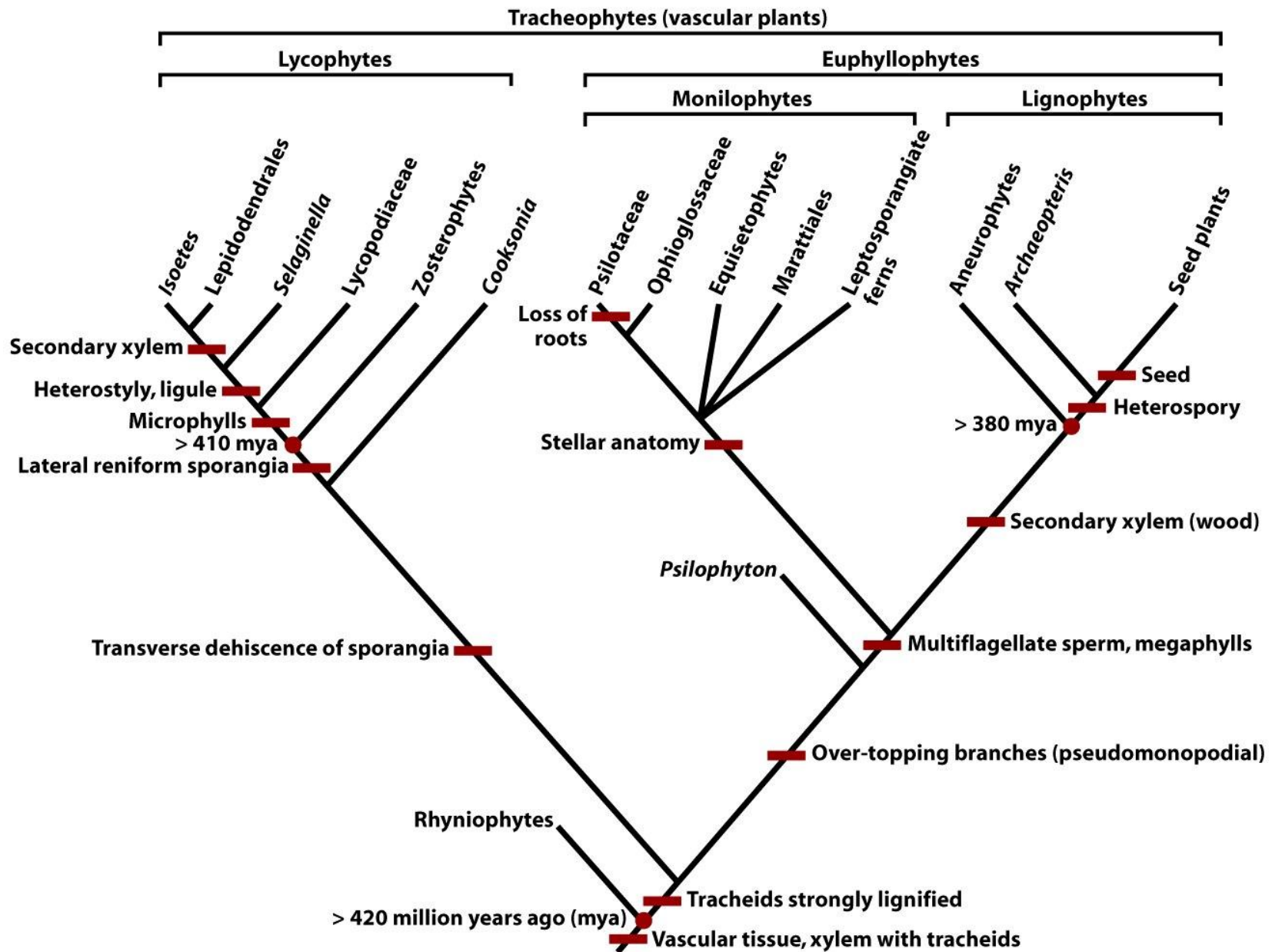


Figure 17-13
Biology of Plants, Seventh Edition
 © 2005 W. H. Freeman and Company



Figure 20-7b
Biology of Plants, Seventh Edition
© 2005 W. H. Freeman and Company

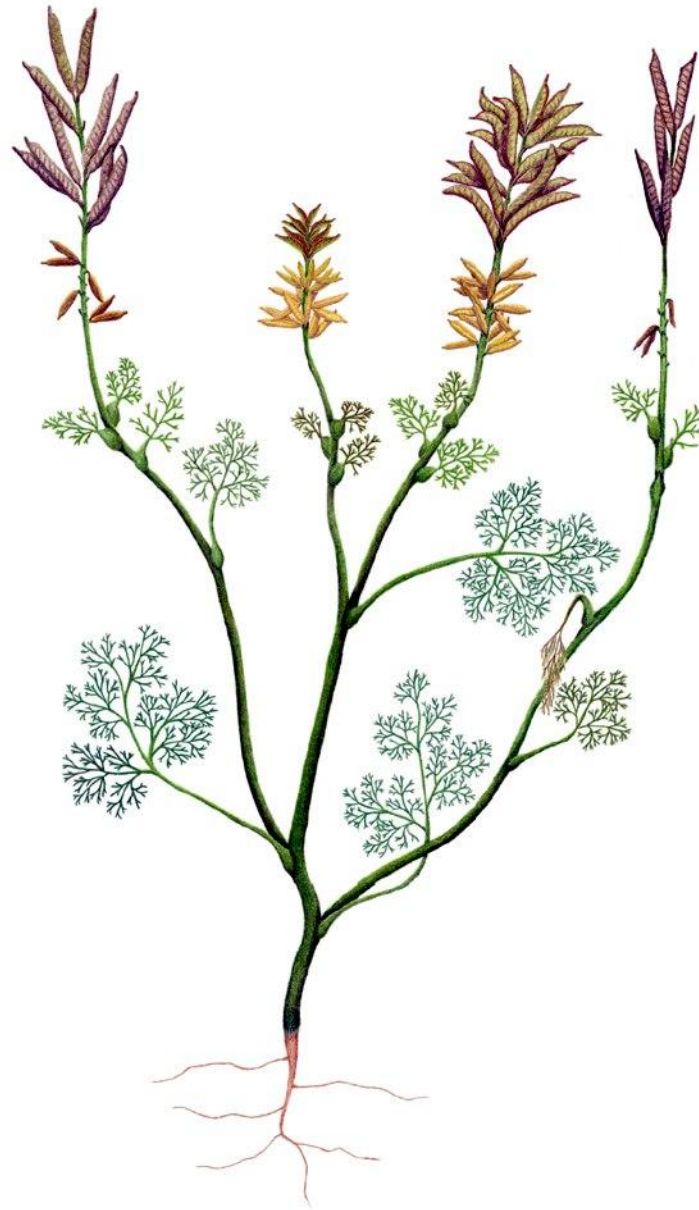
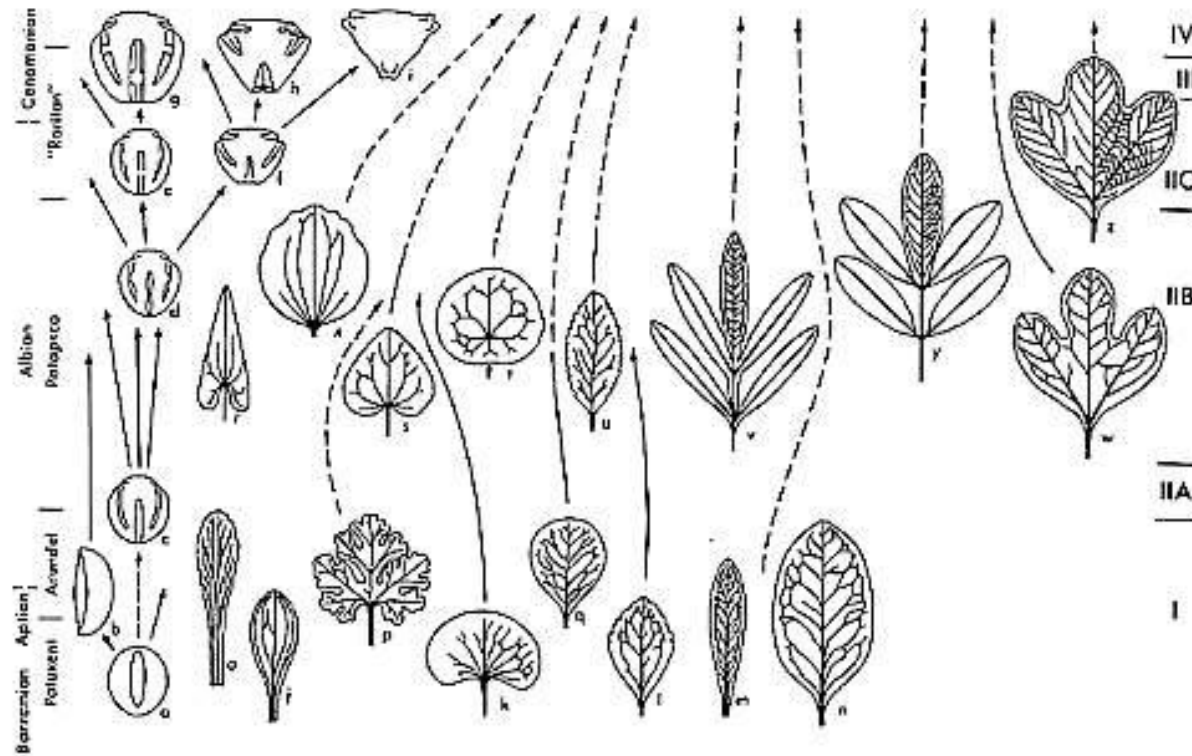


Figure 20-7a
Biology of Plants, Seventh Edition
© 2005 W. H. Freeman and Company

Cretaceous, 125 million yrs bp.



LS4.A: Evidence of Common Ancestry and Diversity

What evidence shows that different species are related? (pg 127 of the framework)

“Evidence for common ancestry can be found in the fossil record, from comparative anatomy, from comparative embryology, and from the similarities of cellular processes and structures and of DNA across all species.”

(Do groupings by leaf shape align with groupings by flower/fruit?)

Oak Phylogeny

<https://w3.pierroton.inra.fr/QuercusPortal/index.php?p=TAXONOMY>

[Tree of Life project: **Fagaceae**](#)

[Taxonomy browser](#)

[Angiosperm Phylogeny](#)

